

# A STITCH IN TIME

Quilters Unlimited, Burke Chapter

www.QuiltersUnlimited.org • January 2012 Newsletter • Volume XVIII, Issue 5

## BURKE CALENDAR

### September 2011

11 Sully Quilt Show and Sale

14 Business Meeting

21 Speaker: Nancy Shriber  
'Contemporary Sashiko'  
!!!!!!! 3rd Wednesday !!!!!!!

### October 2011

12 Business Meeting

15 Big QU Speaker: Susan Carlson

26 Speaker: Julia Pfaff  
'What Place is This? Archeology  
Inspired Quilts'

Terra Centre Elementary School

### November 2011

9 Auction

17-20 Fall Retreat

### December 2011

14 Holiday Social

Orange Hunt Elementary School

### January 2012

11 Business Meeting

25 QUILTO

### February 2012

8 Business Meeting

22 Speaker: Liz Kettle  
'Thread Basics'

### March 2012

14 Business Meeting

Orange Hunt Elementary School

28 Speaker: Debra of Zebra Patterns  
Project Class

Orange Hunt Elementary School

### April 2012

11 Business Meeting

19-22 Spring Retreat

25 Speaker: Karen Eckmeier  
Lecture and workshop: Happy Villages &  
Accidental Landscapes

### May 2012

9 Business Meeting:

23 Speaker: Carly Mul of Web Fabrics  
'Back by Popular Demand,  
Market Trends'

### June 2012

1-3 Quilter's Unlimited Show

13 June Social

### July 2012

11 Speaker: Phyllis Hatcher

### August 2012

8 Speaker: Lauren Kingsland

## President's Letter

January is a time for new beginning and hopes. Our chapter has lost several members throughout the year and we should remember them with fondness and appreciation for all their efforts. They helped make the group what it is today.

In December, I received an email from a new member who told me she didn't feel included when she came to meetings. I encouraged her to get involved and become an ACTIVE member! We have so many committees that need an extra pair of hands to make the load lighter for everyone. Many times you don't have to worry about running the committee because another member has already volunteered to be the coordinator/chairperson on it. An example is the Spring Retreat, Quilt Collector or June Social committees. Each has a chairperson, but may be looking for people like you to offer some of your time and effort for a one time or couple week commitment. We are all busy, but often you can assist when the project is short term. Working on these projects can be so gratifying when you get some recognition and people start sharing their ideas with you. There are always the few who seem to do a lot of the work. Challenge yourself to find a way to get off the sidelines and into the activities that Burke QU has to share. Volunteering is one of Burke QU's best strengths.

Don't forget to circle January 28th on your calendar for the Charity sewing day at Burke United Methodist Church. It is a fun day of sewing and friendship as we produce quilts for soldiers, babies or other causes. If you can't make it that day, please make sure to get a kit from Sue Meyer so you can sew it on your own. We give you all the materials or you can provide your own to finish it. We just need your time and talent!! It is so rewarding to see these projects come back as a show and tell weeks later. Many times we get last minute requests for quilts to donate so it is helpful to have a few in reserves.

Cont. on p. 7

Burke QU chapter meetings (Sept - June) take place at:

Cherry Run Elementary School.....

Except as noted in calendar

9732 Ironmaster Drive



## 2011-2012 BOARD & COMMITTEES

<b>President</b>	Pat Price <a href="mailto:thmewpvp@verizon.net">thmewpvp@verizon.net</a>
703-690-3040	
<b>Vice President (Admin)</b>	Renee Castrop <a href="mailto:renee.castrop@verizon.net">renee.castrop@verizon.net</a>
703-978-7513	
<b>Vice President (Programs)</b>	Nikki Allen <a href="mailto:nallendesigns@aol.com">nallendesigns@aol.com</a>
703-455-7016	
<b>Secretary</b>	Lois Borlase <a href="mailto:quilter8509@yahoo.com">quilter8509@yahoo.com</a>
703-690-9535	
<b>Treasurer</b>	Marilyn Owendorf <a href="mailto:marilynowendoff@yahoo.com">marilynowendoff@yahoo.com</a>
703-323-0054	
<b>Nominating Chair</b>	Denise Racz <a href="mailto:denise.racz@fcps.edu">denise.racz@fcps.edu</a>
703-455-7194	
<b>Auction</b>	Susan Fernandez <a href="mailto:mannyandsusan@cox.net">mannyandsusan@cox.net</a>
703-690-9550	
<b>Baby Quilts</b>	Cheryl Koethe <a href="mailto:quiltck@aol.com">quiltck@aol.com</a>
	Gwen Hunt <a href="mailto:huntg886@verizon.net">huntg886@verizon.net</a>
<b>Bee Keeper</b>	
202-832-8739	
<b>Bus Trip</b>	Rita Rivlin <a href="mailto:rrvlin5va@verizon.net">rrvlin5va@verizon.net</a>
703-591-6162	
<b>By-Laws</b>	Not needed in 2011-2012
<b>Challenge</b>	Diane Murtha <a href="mailto:dlmurtha@hotmail.com">dlmurtha@hotmail.com</a>
703-727-9590	
<b>Directory</b>	Jean Taylor <a href="mailto:ArkiJean@verizon.net">ArkiJean@verizon.net</a>
703-644-9480	
<b>Donations</b>	OPEN
	Barb Sherwood <a href="mailto:bsherwood@cox.net">bsherwood@cox.net</a>
<b>E-Blasts</b>	
703-455-5304	
<b>Big Quilt/Fall Lecture Program 2011</b>	Judy Gula <a href="mailto:judy@artisticartifacts.com">judy@artisticartifacts.com</a>
703-503-7981	
<b>Holiday Social</b>	Chris Eiloo <a href="mailto:ceiloo@cox.net">ceiloo@cox.net</a>
703-866-0992	
<b>June Social</b>	Gay Bitter <a href="mailto:bittergk@hotmail.com">bittergk@hotmail.com</a>
609-731-3421	
<b>Library Display</b>	Gay Bitter <a href="mailto:bittergk@hotmail.com">bittergk@hotmail.com</a>
609-731-3421	
<b>Membership</b>	Diane Yim <a href="mailto:yim.cd@verizon.net">yim.cd@verizon.net</a>
703-978-7521	
<b>Midnight Madness</b>	Meghan Welch <a href="mailto:meghaniwelch@yahoo.com">meghaniwelch@yahoo.com</a>
518-569-6229	
<b>Mystery Quilt</b>	Erica Robertson <a href="mailto:erquilter@verizon.net">erquilter@verizon.net</a>
703-503-3619	
<b>Newsletter Editor</b>	Marjie Curia <a href="mailto:mcuria53@gmail.com">mcuria53@gmail.com</a>
703-256-5610	
<b>Photographer</b>	Marjie Curia <a href="mailto:mcuria53@gmail.com">mcuria53@gmail.com</a>
703-256-5610	
<b>Property Chair</b>	Jen St. Martin <a href="mailto:quilterjenstm@aol.com">quilterjenstm@aol.com</a>
703-217-2265	
<b>Quilt Collector</b>	Lois Borlase <a href="mailto:quilter8509@yahoo.com">quilter8509@yahoo.com</a>
703-690-9535	
<b>Quilt Show Rep</b>	Sandra Rees <a href="mailto:quiltrees1@verizon.net">quiltrees1@verizon.net</a>
703-250-6407	
<b>Refreshments</b>	Debbie Bullock <a href="mailto:dbullock@verizon.net">dbullock@verizon.net</a>
703-971-6618	
<b>Retreat, Fall</b>	Kathye Gillette <a href="mailto:katcando60Verizon.net">katcando60Verizon.net</a>
703-5063-1983	
<b>Retreat, Fall</b>	Sue Meyer <a href="mailto:suziequilt@hotmail.com">suziequilt@hotmail.com</a>
703-426-8720	
<b>Retreat, Spring</b>	Erica Robertson <a href="mailto:erquilter@verizon.net">erquilter@verizon.net</a>
703-503-3619	
<b>Soldier Quilts</b>	Sue Meyer <a href="mailto:suziequilt@hotmail.com">suziequilt@hotmail.com</a>
703-426-8720	
<b>Sunshine</b>	Merce Delaney <a href="mailto:mmd@falconsresidents.org">mmd@falconsresidents.org</a>
703-994-2583	
<b>Ways &amp; Means</b>	Susan Fernandez <a href="mailto:mannyandsusan@cox.net">mannyandsusan@cox.net</a>
703-690-9550	
<b>Ways &amp; Means</b>	Linda Snow <a href="mailto:ljsnow2@verizon.net">ljsnow2@verizon.net</a>
703-256-4377	
<b>Welcome</b>	Karen Burshnick <a href="mailto:KJB4MK@aol.com">KJB4MK@aol.com</a>
703-866-1082	



## Upcoming Burke QU Events--

**January 25 -- QUILTO**

**January 28 -- Charity Sew-In  
(Burke United Methodist Church)**

**February 22 --  
Speaker: Liz Kettle**



# News from the Quilt Collector

## The 2012 QU Quilt Show Registration Process

<http://www.qushowentry.com>

**Who can register a quilt?** Any QU member in good standing may enter up to five quilts in the QU Quilt Show June 1-3, 2012. This is not a competition or a juried exhibit; it is an opportunity to show your fabulous quilts to a very appreciative audience.

**Why do we need to register online?** Having all the information online ensures that all your information is correct, entered in the right place and can be used simultaneously by all the different show committees. This registration system greatly improves the process of getting a quilt through the entire line-up of committees and hanging in the desired location correctly.

### How do I enter a quilt?

Simply go to [www.qushowentry.com](http://www.qushowentry.com) and follow the instructions on the screen. Registration will be open as of January 1, 2012. This website also has general information about the process and a preview form to assist with registration.

This process is very simple and you will be surprised at how easy it is to input the information on your own.

If you do not have a computer or are certain that you just can't wade through the process alone, we can help in person or over the telephone. If that is still too daunting, you can fill out a paper form, bring it to us and we'll register your quilt for you. We will have some blank paper forms available at the meetings.

### Any helpful hints?

- Have all of your information gathered in one place before beginning, including your personal contact info, the name of the designer or pattern, and the agreed-upon name of the challenge or names of other quilters who worked on the quilt. Please note that each challenge entry must have the same "standard/official" name listed or they will not hang together.
- Decide in advance the priority numbers for your quilts in case they cannot all be hung in the show.
- Do not worry about the dimensions of your quilt, as the collectors are still required to measure and photograph your quilt.
- Use only one chapter to enter all of your quilts even if one is a challenge quilt for another chapter.
- During the online registration process, do NOT use your browser "back" button to go to a previous page, as this will cause problems with your registration.
- In order for you to have the same computer designated quilter registration number, please register all of your quilts at the same time. Later entries will have a different quilter number assigned and may be harder for us to find during the editing stage.
- Once you fill out all the information, hit the "submit" button in order to finish the process. Once it has been entered, you will not be able to edit the entry (but we can do that for you through the admin page).
- The on-line system will assign a number for each quilt artist and each quilt; you do not have to remember these numbers but you DO need to print out the confirmation page you receive at the end of the online registration which will have this information.
- All fields must be completed on the forms even if your name is the answer for several of the fields.

**What needs to happen after you register on-line?** Print out the confirmation page and bring it with your "show ready" quilt to us on the dates listed below. Each quilt must still be measured and photographed and we will enter this information on-line through the admin page.

**What is a "show ready" quilt?** A quilt that is completely finished, has a hanging sleeve at least 4 inches deep, has a label with the quilters name/chapter/quilt name/telephone number sewn on the bottom right corner of the back of the quilt and each quilt must arrive in a carrying sack with the same information listed above (plastic bags of any kind are unacceptable).

**When will the pictures and measurements be taken?** Since registration can detract from our regular meetings and portions will have to be completed on-line during the measurement process, we will take advantage of the time before the meetings for this process. If you cannot make one of the following dates, please be sure to contact Lois Borlase before February 22, 2012. You may ask a friend to bring your quilt for measuring and photos if you cannot come on one of the dates listed (be sure your friend has a copy of your confirmation page).

**January 11 – 6:30 p.m. at Cherry Run**

**January 25 – 6:30 p.m. at Cherry Run**

**February 8 – 6:30 p.m. at Cherry Run**

**February 19 (Sunday) - 2:00 p.m. – 6:00 p.m. at Lois Borlase's home**

**February 22 – 6:00 p.m. at Cherry Run (final opportunity)**

**What is the deadline?** The on-line form gives a deadline of February 29, HOWEVER, we must still be able to measure, photograph and edit your entries by that date so the **deadline for Burke QU will be Wednesday, February 22.**

**What if I have more questions?** Please contact BQU Quilt Collector Lois Borlase with any questions or to make special arrangements (cell phone 703-606-8481).

**What if I have more questions?** Please contact BQU Quilt Collector Lois Borlase with any questions or to make special arrangements (cell phone 703-606-8481).

## Upcoming Workshop

**Who:** *Liz Kettle*

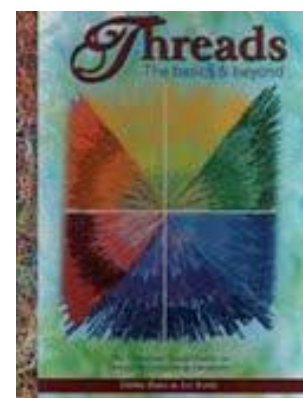
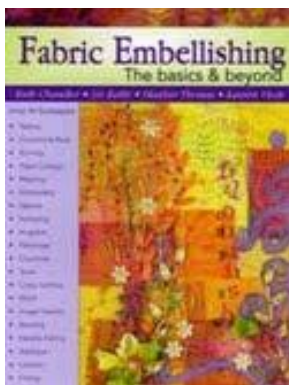
**Lecture:** *Exotic Thread Tales*

**Where:** *Cherry Run Elementary School*

**When:** *February 22, 2012, 7pm Social, 7:30pm Lecture*

Come on a thread journey with Liz Kettle as we explore the mysteries and secrets of that glorious material we call thread. Traditional cotton or exotic metallic threads thrill us with their color, shine, texture and the wonderful possibility of creation that is wound around each spool. These same threads often frustrate us as we try to tame their wild and unruly ways. In this thread travelogue, Liz will share her expertise gleaned from years exploring the magical world of thread, unravel some thread myths and share tips to set you on your own magical stitch journey.

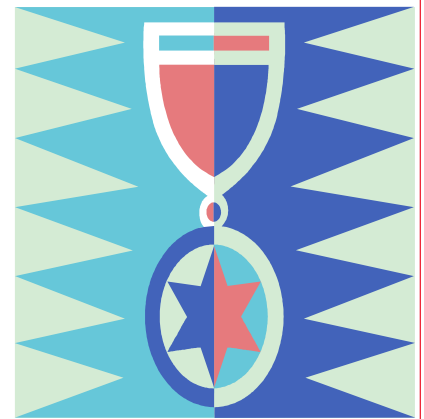
**Workshop:** Liz will also be teaching a class at Artistic Artifacts titled 'Metal Magic', on Sun. Feb. 26, 2012. For more information and to register, go to [www.artisticartifacts.com](http://www.artisticartifacts.com).



## Quilts of Valor - Special Guest Speaker

LTC Tim Murtha, Diane Murtha's husband, will join us for the January 11th business meeting to give us a personal perspective on the quilts of valor provided to wounded warriors.

If you have any questions please contact Diane at: 703-727-9590.



### CHARITY SEW-IN

Soup's on. It's toasty inside. Join us for the annual Burke QU charity sew-in on Saturday, January 28, 2012 from 8:30 AM to 4:00 PM at Burke United Methodist Church corner of Burke Lake Rd and Burke Centre Pkwy

Please bring a salad or sweets for coffee or dessert. Sue has kits available for soldiers and Bethany House. Cheryl has kits and fabric available for kid's quilts. There will be backing material and batting for your unfinished tops. So join us for a day of sewing and friendship.

Sue Meyer 703-426-8720

Cheryl Koethe 703-941-6694



### Baby Quilts

Look for the Baby Quilt table at our meetings. I have some very easy kits that all you have to do is sew the blocks together and lots of really cute fabric! Please contact me if you know of an organization or a child that could use one of our quilts.

Grab some fabric or a kit just in case we have one of our snowy days and you need a small project to work on!

Cheryl Koethe  
[quiltck@aol.com](mailto:quiltck@aol.com)

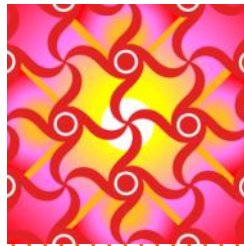


## Other Burke News

### FROM THE SUNSHINE COMMITTEE

*A Remembrance card was sent to Mary Sabota on the death of her Father 11/30/2011. No others have been sent this month. If you all know of a member that has had surgery or who has been ill, please let me know. We also send notes for new babies, the loss of a loved one in the family and notes of encouragement.*

*Merce Delaney,  
Committee chairperson*



### BEEKEEPER WHAT'S BUZZING AT BURKE QU?

Are you looking for a bee that has similar interests in piecing, traditional, appliqué, contemporary or art quilts as you do? Would you like to explore some new techniques in a small group? Are you new to the area and are looking for other people interested in quilting along with some fun? Burke QU has bees for all skill levels. Day and evening groups are available. If any new groups have formed or you have new contact information, please contact Gwen Hunt at email: [huntg886@verizon.net](mailto:huntg886@verizon.net) or telephone: 202-832-8739.

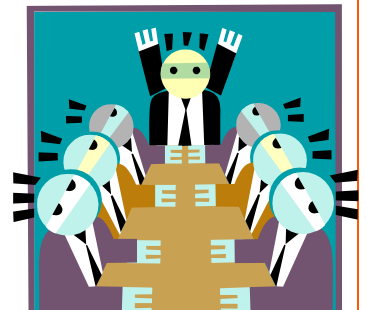
Also, if any groups are interested in adding people please coordinate with me. I will put you in contact with bees that I think could match your interests.



## Membership

*There were no new members this month. Please notify me of any change in your contact information.*

*Diane Yim  
([yim.cd@verizon.net](mailto:yim.cd@verizon.net))*



## President's letter cont. from p. 1

As a special treat in January, we will have Tim Murtha, husband of Diane Murtha, speak to us at the business meeting on January 12th. He is a Lt Colonel who recently came back from the war zone and he wants to share his perspective on the "Quilts of Valor" that he saw while he was overseas.

One committee that I still need help with is the "Donations" Committee. This is a small group of people needed to make recommendations where to donate some of our income from the Auction and Ways and Means fundraisers and donating them to various causes that involve quilting. I have a project folder with notes from previous years that you can use for guidance. We plan to discuss this in the March timeframe so we really need to fill this position soon. The Committee chair on this will make her presentation to the membership during the March business meeting where we will discuss and vote on the proposal.

A new project this year is preparing a Burke QU "story board" for the row end caps at the annual quilt show in June 2012. We need someone who can take our two boards and organize our activities and chapter information in an attractive manner. We want to add event pictures we have taken, list our projects and committees and show our chapter meeting times and location so new members can find us. A small executive committee will work with this person(s) to help develop the boards. I need your creativity! Someone with a scrapbooking or artistic background would be an asset to add the special touch that will make our signs stand out. This is something that could be done at home. The final project is due by late May 2012. Please see or email me if you are interested or know someone who can help us. Any expenses to produce these board will be reimbursed by the group.

I am happy to say Erica Robertson has volunteered to head our spring retreat in April 2012. Look for her updates on this topic. Also our Quilt Collector, Lois Borlase, will start measuring submitted quilts beginning in January through February. This is an online registration process so enroll early if you think you want to submit your quilts. See Lois' article for further guidance.

Join us for Quilto on January 25. This is the quilters' version of Bingo and is a great way to win some new fabric that maybe missing from your current stash! I hope to see you all at the Business meeting on January 11th. We have a lot of fun things planned through June 2012 and you don't want to miss any details on these events.

Happy New Year Everyone!  
Pat

A HAPPY  
NEW YEAR

## Looking for Volunteers to Help Host VCQ in March

Virginia Consortium of Quilters (VCQ) is our statewide quilting guild ([www.vcq.org](http://www.vcq.org)) and was established in 1984 to promote quilting and unite quilters around the state. The book Quilts of Virginia is the result of VCQ's quilt documentation project in the 1980's. We help support the VA Quilt Museum and plan to work with them on future documentation. We meet 4 times a year in locations all over the state, with each meeting including 3-4 workshops, Come Quilt with Me (for those who don't want a class) and our quarterly business meeting. Every 2 years we sponsor a "Celebration" weekend which is a 4-day retreat at Smith Mountain Lake with national and Virginia teachers.

Kathy McCrea and Susan Price of BQU are both on the VCQ board and agreed to organize the March 10, 2012 meeting here in Northern Virginia. We typically have a "host" guild, which because of our affiliation will be Burke QU, and would love a few volunteers to help with the following: set-up and providing morning snacks (baked goods or fruit), assisting with lunch set-up (box lunches & drinks), and possibly making a small favor for each attendee. The help that day could be in shifts, about 7:30 – 9:30 AM, and 11:30- 12:30 PM.

Of course, all quilters are welcome to attend VCQ meetings, even if they aren't members. We hope some of you will choose to attend and learn about VCQ. The location for this meeting will be Little River United Church of Christ in Annandale, across Rt. 236 from NOVA. There will be 4 classes with local teachers; the day includes a 5 hour workshop, lunch and the business meeting; details will be in our next newsletter to be published in early February and will be available online at [www.vcq.org](http://www.vcq.org).

If you would like to help, or have questions, please contact either Susan Price at [sue-price@cox.net](mailto:sue-price@cox.net) or Kathy McCrea at [kathy.mccrea@cox.net](mailto:kathy.mccrea@cox.net). Find out more about VCQ activities on our Facebook page (search VCQ Virginia Consortium of Quilters).

## *Holiday Social*



A wonderful time was had by everyone who attended the Holiday Social planned by Chris Eiloo and her bee members. After a great dinner of chili and taco salads, we all enjoyed the chocolate and desserts.

## *And look at all the Show and Tell!!*



Bring your "show and tell" items to the next meeting so we can see what everyone is working on. Your efforts motivate others to try new challenges, finish their UFOs and improve their skills through the use of new colors and patterns. ☺

## Mid Atlantic Quilt Show Volunteers Needed

It's official. We have received notification that Quilters Unlimited will be able to display our Virginia Beauty quilt and sell raffle tickets at the Festival, February 23 to 26, 2012. In return for this we are to provide **32** volunteer hours on Saturday, the 25<sup>th</sup>.

I will need to provide a list of volunteers no later than February 1<sup>st</sup>. Example of the shifts are 10 am - 12 pm; 12 pm - 2 pm; 2 pm - 4 pm; and 4 pm - 6 pm.

It has been requested that there be no one-hour shifts so if there are enough of us (16) we should be able to only have to give two hours each.

In conjunction with the volunteer hours we will need people to staff the raffle table on Thursday thru Sunday, so please consider volunteering!

All volunteers must either pay the pre-registration fee for the event or pay the general admission fee of \$14.

Thank you and e-mail or call Julia to volunteer or if you have any questions.

~Julia Byrne

[jtbyrne@verizon.net](mailto:jtbyrne@verizon.net)

703-938-4244

